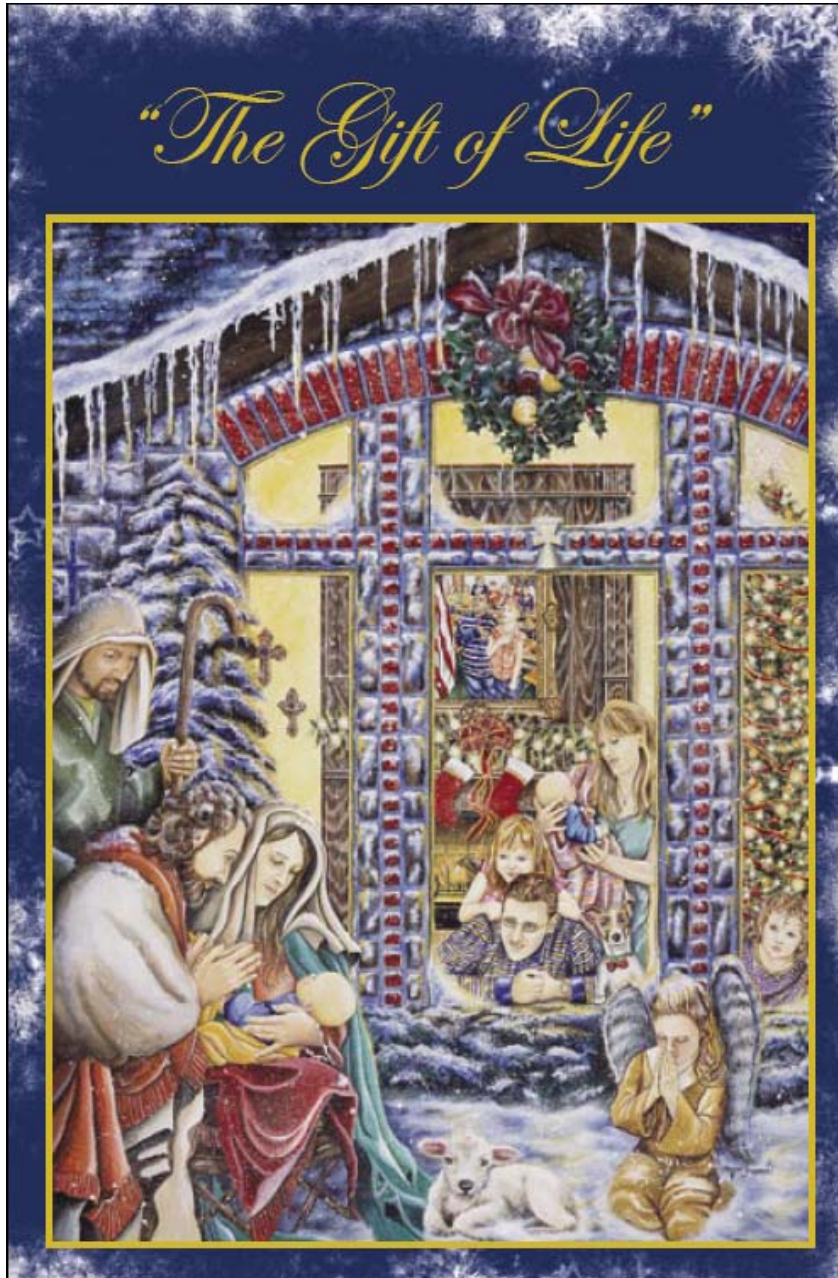


The Key to the Hidden Crosses in *The Gift of Life*



There are at least a dozen crosses “hidden” in the painting. Some are more obvious than others. Interestingly, there are some crosses found in the painting that weren’t originally intended. Here’s the official list (although you may discover others not listed):

#1 and #2 are the brick/stone window dividers.

#3 is the cast stone between the two larger crosses.

#4 and #5 are the two crosses on the wall inside the house.

#6 is immediately above the shepherd’s head (in blue).

#7 can be found in the icicles.

#8 is in the bow on the Christmas wreath (in snow).

#9 is on the (yellow) ornament on the Christmas wreath.

#10 is the on the mother’s necklace.

#11 is on Marnie’s signature in the lower right (not visible on the web images but visible on the cards and prints).

#12 (and bonus #13) is formed by the legs on the crib.